



Transforming communities with **quality education**

*We work towards an early
childhood that is free,
joyful and helps build
a better future.*

aeiotü

WHO ARE WE?



WHO WE ARE

We are a **Colombian social enterprise** that aims to transform communities innovatively and sustainably through the development of the full potential of all children.




Inspired by **Reggio Emilia's** philosophy, we have created the **aeioTU Educational Experience**, an innovative educational model where art, play and exploration are key to children's development, their families engagement and the development of their communities.



aeioTU Educational Experience

is backed by measurable results and scientific evidence from a longitudinal study done by the **Universidad de los Andes** and the **NIEER Center at Rutgers University**.



This study showed that:

1. **After 8 months** participating in the **aeioTU Educational Experience**, children exhibited significant difference in cognitive development.

2. It also showed that **their parents play more**, use fewer punishments, and participate more in democratic activities, which improves the well-being of children, families, and community.

3. Thus, it contributes to **closing the development gap** between children from high and low-income families.

OUR IMPACT





15
years

working to improve the quality
and coverage of early
childhood education in
**Colombia, Panama and
Mexico**



15
years

Impacting the lives
of more than



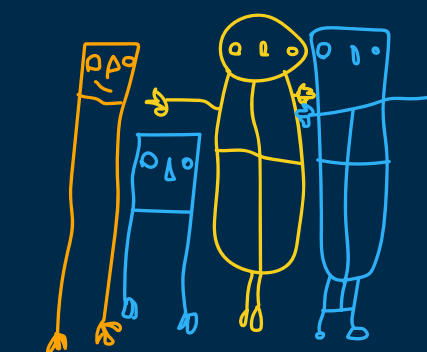
750.303
children

Improving the
skills and
knowledge
of more than



58.137
teachers

Influencing
the parenting
practices of



993.726
parents and
caregivers

Enriching the
quality of



4.791
educational
spaces

aeiotü

OUR STRATEGIC LINES:

- 1. Direct Operation**
- 2. Digital**
- 3. Consultancy and Projects**
- 4. Advocacy**

1. Direct Operation



DIRECT OPERATION

At **aeioTU** we are building a large-scale network of transformative public and private centers that offer the aeioTU Educational Experience to children from diverse backgrounds and family incomes in Colombia. Additionally, we are currently developing a low-cost model, which will allow us to expand the impact of the **aeioTU Educational Experience** to benefit low-income families and provide entrepreneurial opportunities to people in vulnerable communities. Through this initiative we aim to transform the dynamics of the care market in Colombia.



The **aeioTU centers** are the foundation for all the work done at our organization as they serve as referents of good practices to spread our methods and act as innovation labs where children, families, caregivers, teachers, and communities can interact and engage. Thus, creating the systemic change we want to achieve.

We currently have **1 private center and 7 public centers**. The latter are in partnership with the National Government to ensure we have a broad impact in the most vulnerable urban communities across Colombia.

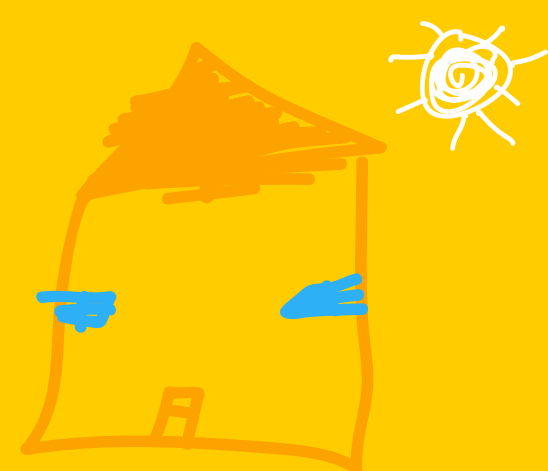


44.211
children

**WE HAVE
IMPACTED**



28.514
teachers



78
education
spaces



70.425
parents and
caregivers

aeiotü

Our public centers offer two models of care to the children:



1. **aeioTU Center** (Institutional modality):

Refers to the **facilities that are specifically designed** for children and teachers in alignment with the aeioTU Educational Experience standards, in which children receive comprehensive care (education, nutrition, and care).

2. **aeioTU at Home** (Home-based program):

It arises as a strategy to accompany families in their permanent role of raising their children.

This modality, according to the aeioTU Educational Experience, seeks children's comprehensive development from gestation to 2 years, by **creating spaces and carrying out learning strategies directly in children's homes**. This is achieved through families' group meetings and home visits that allow providing meaningful and customized experiences to strengthen affective bonds and positive interactions between children and their caregivers by using play, exploration, and the multiple elements already present in children's environment.



Private centers:

Children build their own learning. In **aeioTU**, we accompany them to develop their full potential through play, exploration, and investigation based on the body and movement.

Classrooms:



Walkers (11 months – 2 years): Strengthening motor skills and encouraging language development, curiosity, and wonder.



Explorers (2 – 3 years old): Exploring the human body; using art as a learning tool.



Adventurers (3 – 4 years old): We delve into graphic processes, letter recognition, and numbers.



Researchers (4 – 5 years old): We build and assemble in 3D, thus promoting children's development in a natural and joyful way.

aeiotü

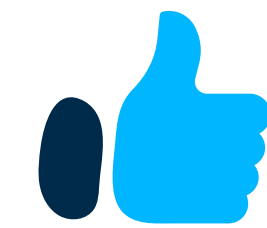
2. Digital



The aeioTU Network is a social learning community on early childhood. Its purpose is to bring together teachers, parents, caregivers, and educational leaders, to strengthen their educational and parenting practices so that they can assertively accompany children under 5 years of age.



The platform, currently has more than **25.000 users**, and offers different types of content according to the interest of its members, as follows:



Free content



E-learning module



Learning Community



Store





Free contents

More than **2.000** contents for adults to improve their educational and parenting practices, through different formats such as demonstration videos, podcast testimonials, infographics, documents, parenting tips, tips for classroom experiences with children, ideas to create pedagogical tools and stories, etc.

E-learning Module

It is divided into two types of courses:

Free courses: They aim to help educators expand their knowledge of early childhood development and strengthen their educational practices. Currently, the platform offers **3 free digital courses**.

Paid courses: Currently, the platform has **33 paid courses and 2 certificate programs 120-hour**. Most of these courses are focused on the aeioTU Educational Model, however, there are also general courses to strengthen the knowledge of educators about how to provide comprehensive care to early childhood in an assertive way.

Courses



• Free



Play as an enhancer of learning in Early Childhood



Inclusion since Early Childhood: boys and girls with disabilities



Digital Literacy

• Education and a new normalcy



The safe return of **teachers** to the ECD center



The safe return of **parents** to the ECD center



Strengthening the role of the educator with online learning

• The basics to provide Comprehensive Early Childhood care

Care and Parenting Practice

Breastfeeding is a natural thing

Nutrition and nutrition education

Prevent and detect violence in Early Childhood

Food handling safe and good practices

Prevalent diseases in Early Childhood

Tools and guidelines to implement the differential approach

• The aeioTU Educational Experience certificate course

Fundamentals	Our values	Building Knowledge in early childhood education	The aesthetic and cultural relationship	Inclusion
Environments	What do we understand by environment?	Learning spaces at an ECD center	Resources	
Strategies for learning	What is a strategy for learning?	Which are the strategies for learning?		
Transitions	Transition related to the adaptation period at the ECD center	Transitions within the ECD Center	Transitions from Early Childhood education to formal education	
Children follow-up	Learning objectives and dimensions of child development	Child development progress	Child development alerts	

The above courses can be taken separately, and the credits can be transferred to obtain the aeioTU Educational Experience certificate course.

• Learning based on research projects in the Early Childhood certificate course

Building knowledge through project-based learning

Project-based learning

How is knowledge built based on research projects?

The adult as a promoter of project-based learning

Before a research project

How to identify children's interests?

Predictive step: hypotheses and prior knowledge of children

Documentation as a cross-tool for learning processes

The concept map, resources, and planning

During the research project

Art as a transversal axis for project-based learning

Experiment and discover through project-based learning

Pedagogical tools: what are they and how to create them?

After the research project

How to identify the completion of a research project?

Closing a research project





Learning community

Within the platform, each user has a profile that allows him/her to self-manage his/her learning, interact with other users, and create groups and communities around early childhood. You can also share personal or professional information related to your course learnings on the “wall” or in different forums or groups.



Store

Red aeioTU has an online store, where you can find different products such as mugs, agendas, games, educational tools, among other.

Most of these products are designed by the children of aeioTU and each of them refers to a different story that was created by them. This store will be at the service of other organizations that wish to offer their products to parents, educators, and educational organizations

3. Consultancy and Projects



The consultancies and projects are comprehensive solutions with a focus on the transformation of the early childhood ecosystem through which aeioTU transfers its knowledge and best practices to other actors, so that they can understand and learn fundamental concepts of innovative and high-quality care and education based on the aeioTU Educational Model, thus contributing to the construction of early childhood culture.



Since

2012

we started with the development
of consultancies and projects and
since then we have impacted

5

Countries

599.248

Children



38.423

Teachers



770.947

Parents and
caregivers



4.733

Education
spaces

*Our service offer is divided into **Consultancies** and **Projects***

aeiotü



Consultancy

Solutions for educational organizations and government entities that enhance their comprehensive care processes for Early Childhood from fundamental axes such as the pedagogical model, leadership, management, operation and human development, based on the **aeioTU Educational Model**.

We do this through different alternatives such as:

- ☺ Capacity development: training, accompaniment, face-to-face and virtual internships.
- ☺ Consulting with experts
- ☺ Development of programs: early childhood curriculum, training curriculum, programs with families, etc.

Projects

They are comprehensive solutions based on the **aeioTU Educational Model**, which aims to transform Early Childhood ecosystems and contribute to the achievement of the **Sustainable Development Goals (SDGs)** through projects focused on:

- ☺ The improvement in the educational practice for the comprehensive care of Early Childhood
- ☺ Change in early childhood ecosystems
- ☺ Migrant population with emphasis on early childhood
- ☺ Peacebuilding from early childhood
- ☺ Gender equity from early childhood
- ☺ Development of products, solutions, and tools for Early Childhood



Quiddo
CENTRO DE DESARROLLO INFANTIL

JARDÍN
Azulado

Kindergartens inspired by aeioTU:

We provide **support to third** parties to implement our aeioTU Educational Experience at a pedagogical and operational level. Thus, ensuring that these centers promote the culture of early childhood education and continuously work towards achieving high-quality standards at the pedagogical and operational levels.

4. Advocacy

ADVOCACY

Through advocacy we seek to give continuity to the actions of systemic change, based on the transformations promoted by **aeioTU**. As part of the strategy, we intend to generate intersectoral mobilization actions around local early childhood agenda, strengthening the participation of local authorities, the private sector, academia, and social organizations. Through the advocacy plan, we hope to leverage **new resources for early childhood** at the local, national, and international level and influence the improvement of the quality of early childhood education by supporting public policies.



OUR PARTNERS

OUR ALLIES:



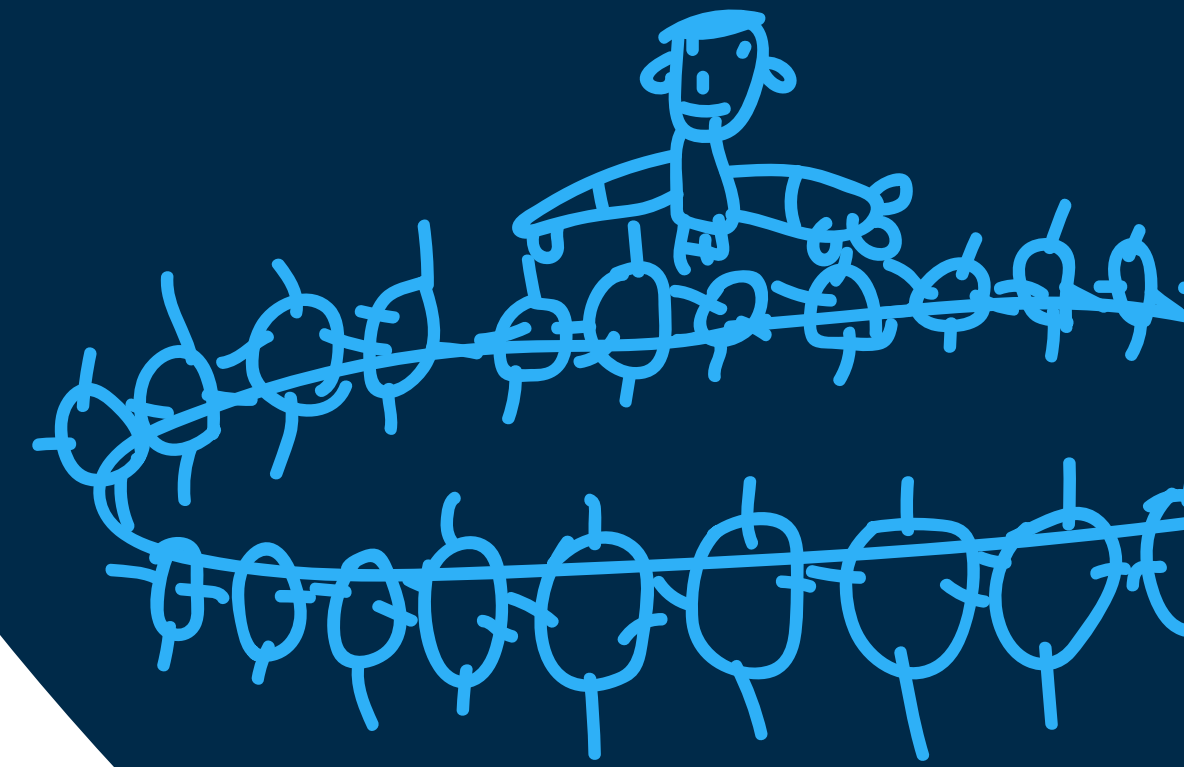
These are some of the companies that have joined our impact

OUR RECOGNITIONS



In February 2022, in the framework of the alarming figures of dropout and interruption of children's education globally, **Greater Share**, a major English NGO, consolidated an innovative philanthropic investment model consisting of a "fund of funds" that focuses on transforming the education of children in underserved communities around the world, by supporting NGOs that implement innovative child-centered education models.

More than 4.000 NGOs around the world participated in this rigorous selection process, in which aeioTU and 7 other NGOs specialized in education were selected to benefit from the assistance of the community of business members of the fund. They will also receive a philanthropic support which will allow them to further increase their impact.
aeioTU is the only organization selected by the fund in Latin America.



WISE **hundrED**  **IDB**

Finally, the aeioTU Educational Experience has been recognized by **WISE** as one of the best educational curriculums in the world and highlighted by **HundrED and the Inter-American Development Bank IDB**, as one of the 15 main innovations in education that foster 21st century skills in Latin America and the Caribbean.

“Thanks to these funds, we will be able to accelerate, grow and strengthen aeioTU’s impact in early childhood ecosystems. Not only in Colombia but also in Mexico and Central America. Our vision is to be able to scale our impact to transform the lives of 4.500.000 children”

Statement **María Adelaida López**,
Executive Director of aeioTU.



The LEGO Foundation



As a part of the **LEGO Idea Conference**, organized by the LEGO Foundation, **the 2022 LEGO Prize was awarded to Maria Adelaida Lopez, the executive director of aeioTU**. The prize is awarded for her extraordinary contribution to improving the lives of children through opportunities for learning, play, and development.

And, in particular, for being a standard-bearer for learning through play in early childhood education in Colombia and Latin America through the aeioTU Educational Experience.

